

# Improved connection between Inland Waterway Transport and Sustainable Urban Logistics

Loïc Pecher

COVENTURIS

21/06/23



# Scope of the studies and tests

Logistics study

Multimodal logistics scenarios

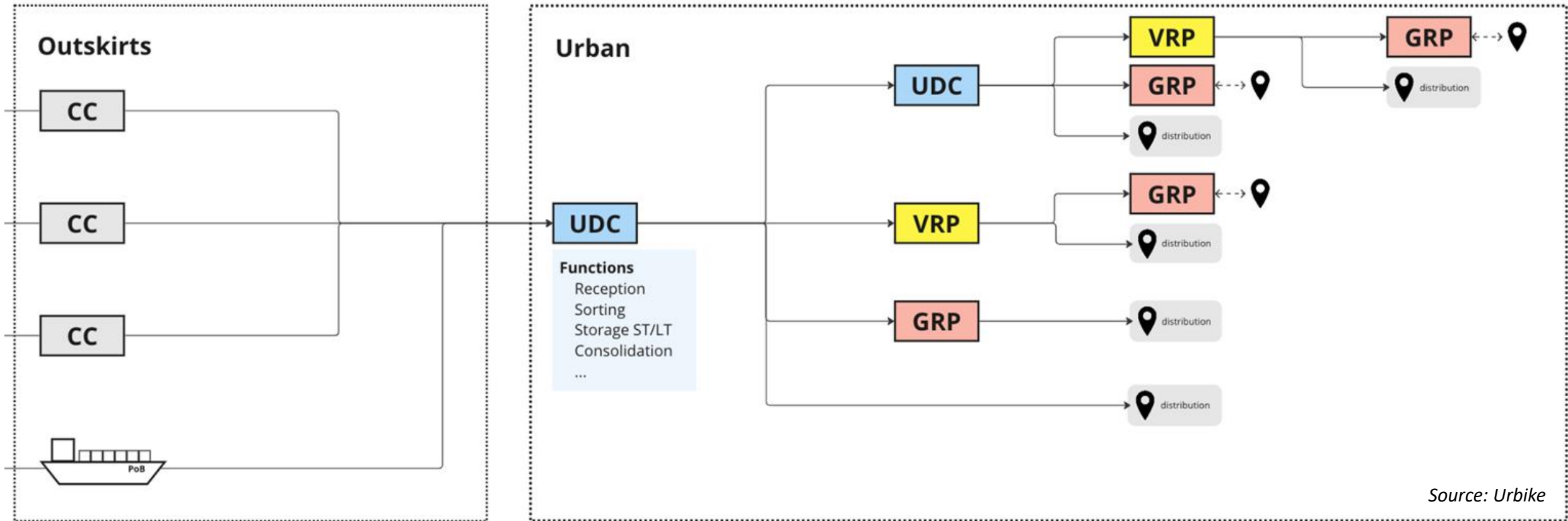
Operational tests

At least one scenario

Technical study

Transhipment solution

# Logistics engineering study



**CC:** Consolidation centre  
**UDC:** Urban distribution centre  
**VRP:** Vehicle reception point  
**GRP:** Goods reception point



# Urban goods



# Containerization



*iWald: Integral World And Local Delivery*





Box2Home

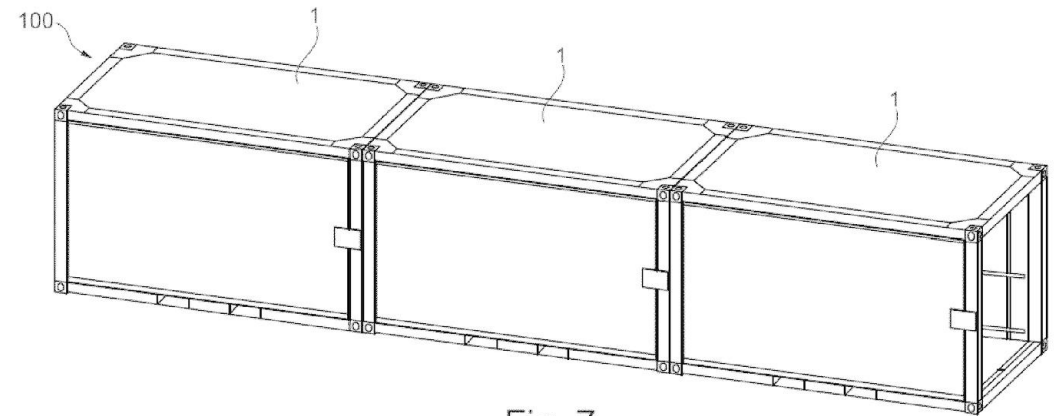


Fig. 7

Patent EP4163224A2



# Logistics services



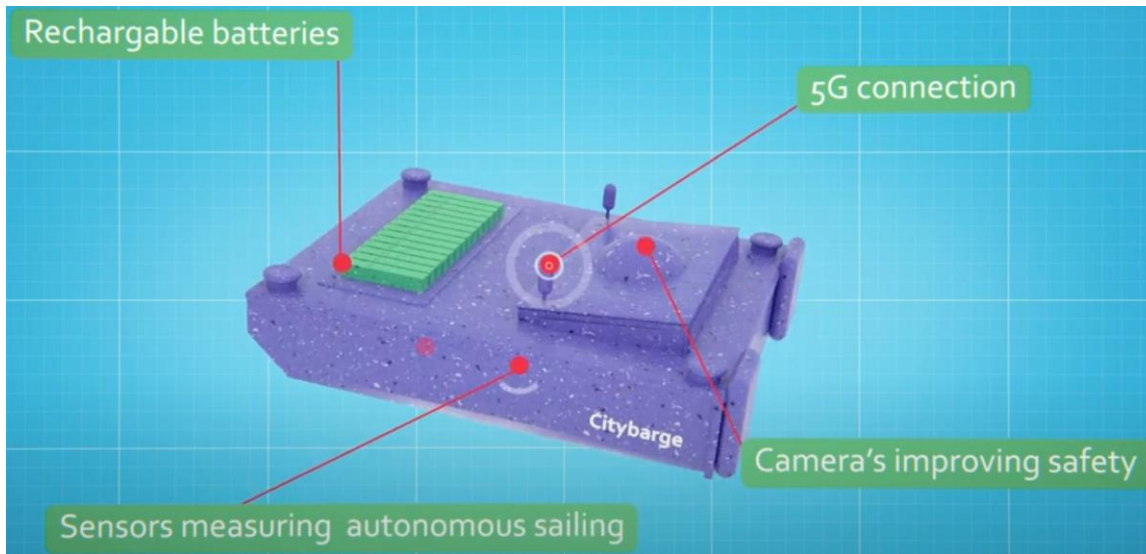
FLUDIS





*GreenWave (IWTS2.0, AVATAR, SmartTrack4Waterway)*





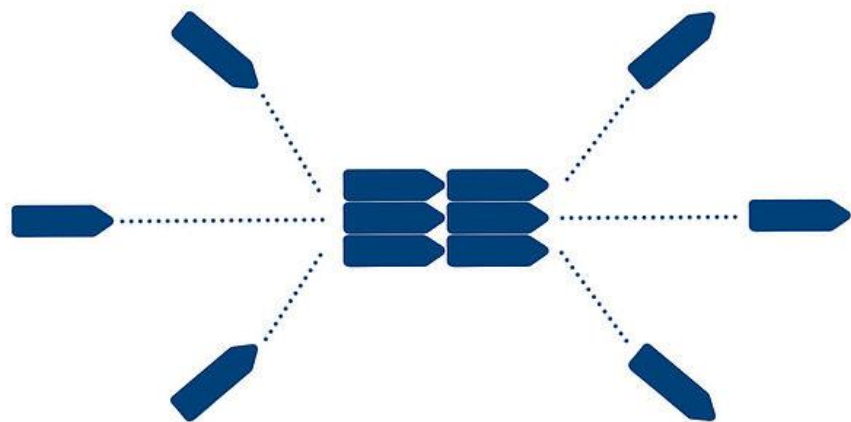
CityBarge



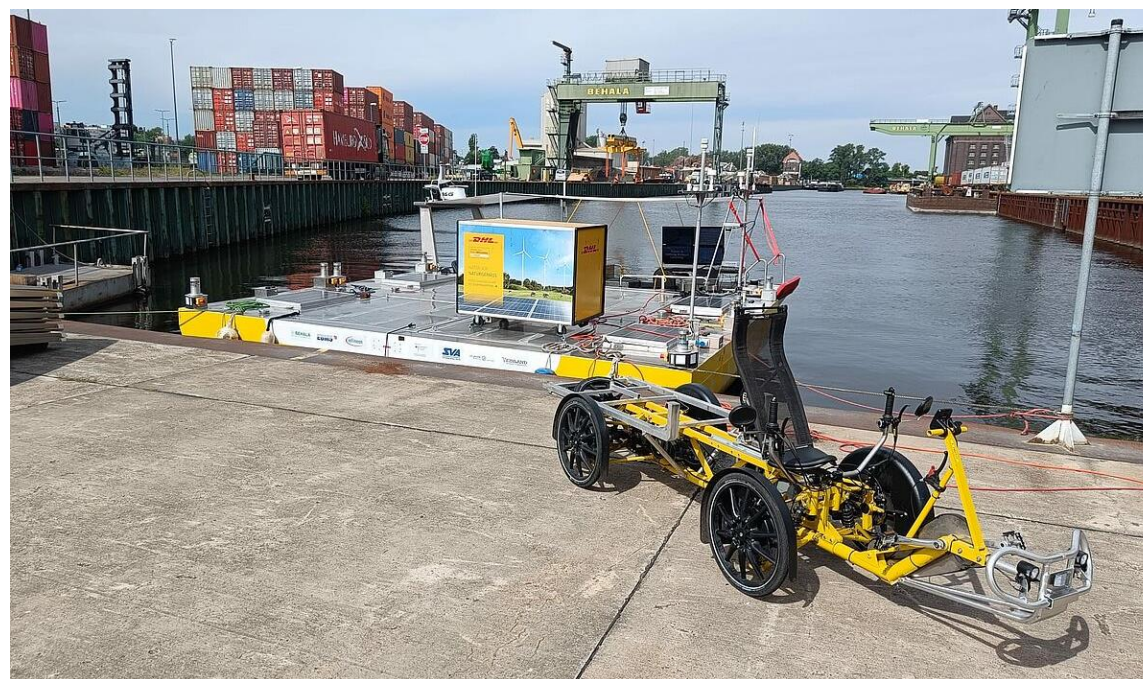
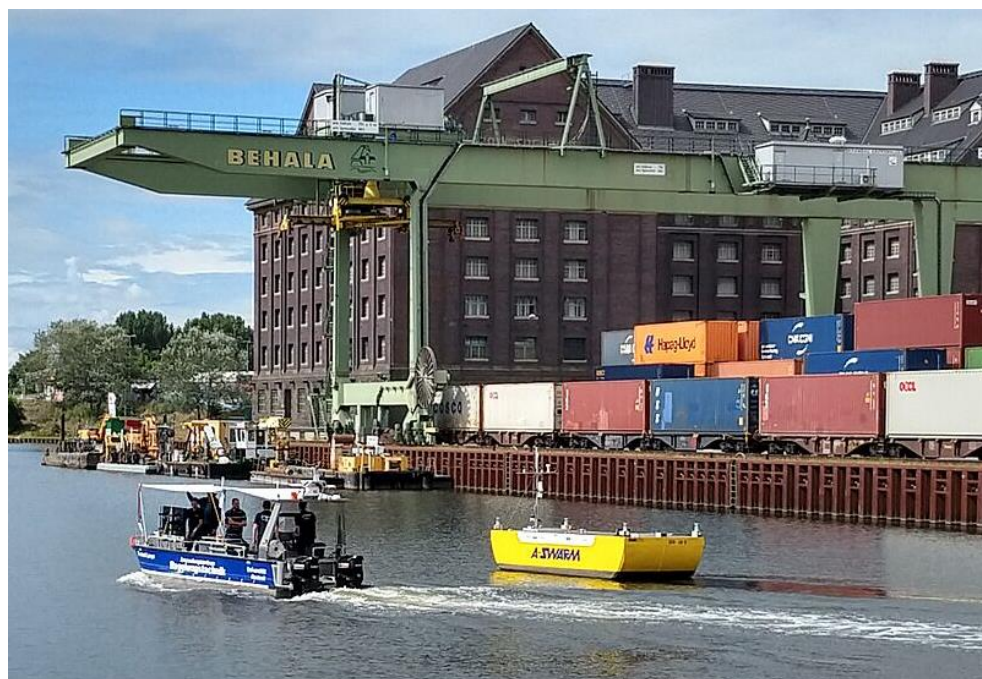
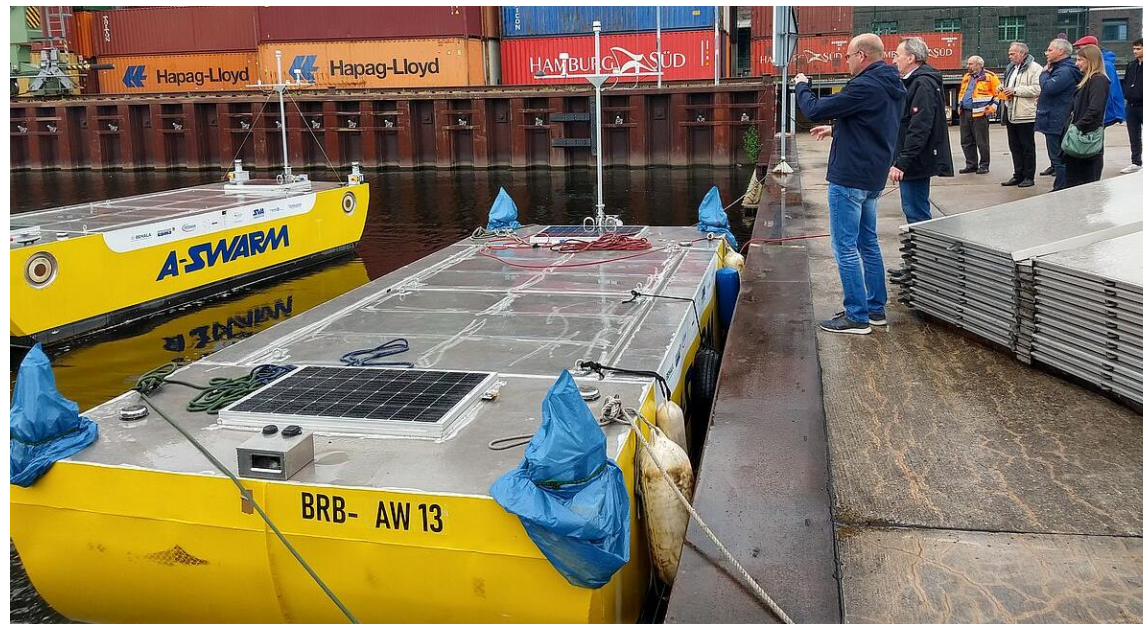


[www.digitalsow.de](http://www.digitalsow.de)





A-SWARM







Venice



Berlin



London



Amsterdam





Port de la Bourbonnais, Paris





Port de la Bourdonnais, Paris

*Wikimedia Commons, Lionel Allorge*



# Modular mobile terminals



*An analysis of the potential locations for Modular Mobile Terminals  
Case study for the ports of Rotterdam and Antwerp  
TU Delft*

# Micro-hubs



*Ziegler and Interparking*









Medieval harbour crane, Bruges

Thank you for  
your attention